

Contact details

Holbrook Ward
Woodlands Unit
Queen Mary's Hospital
Sidcup
DA14 6LT

Telephone

020 8308 3106

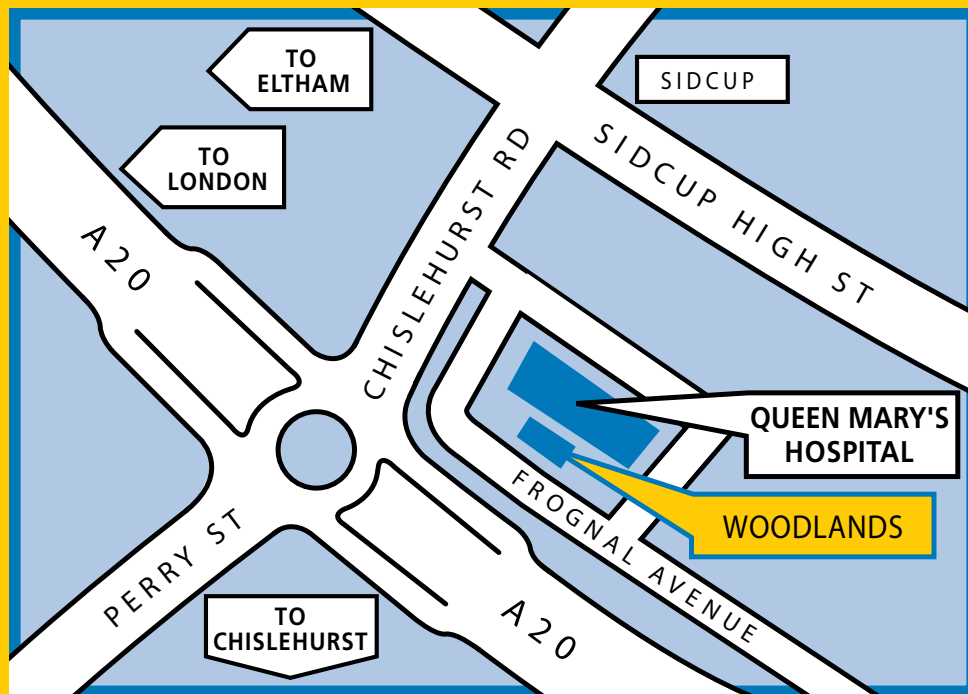
oxleas.nhs.uk

Buses: 229, 286, R11, 160, 269 and B14 stop outside the hospital.

Trains: The nearest stations Sidcup and Chislehurst are a five minute taxi ride away.

Car parking: There is limited pay and display car parking on the hospital site.

Accessibility: The building is easily accessible for people with mobility problems.



Follow us on Twitter
[@oxleasNHS](https://twitter.com/oxleasNHS)



Like us on Facebook
facebook.com/oxleasNHS

Feb 2016 OX71

Oxleas
NHS

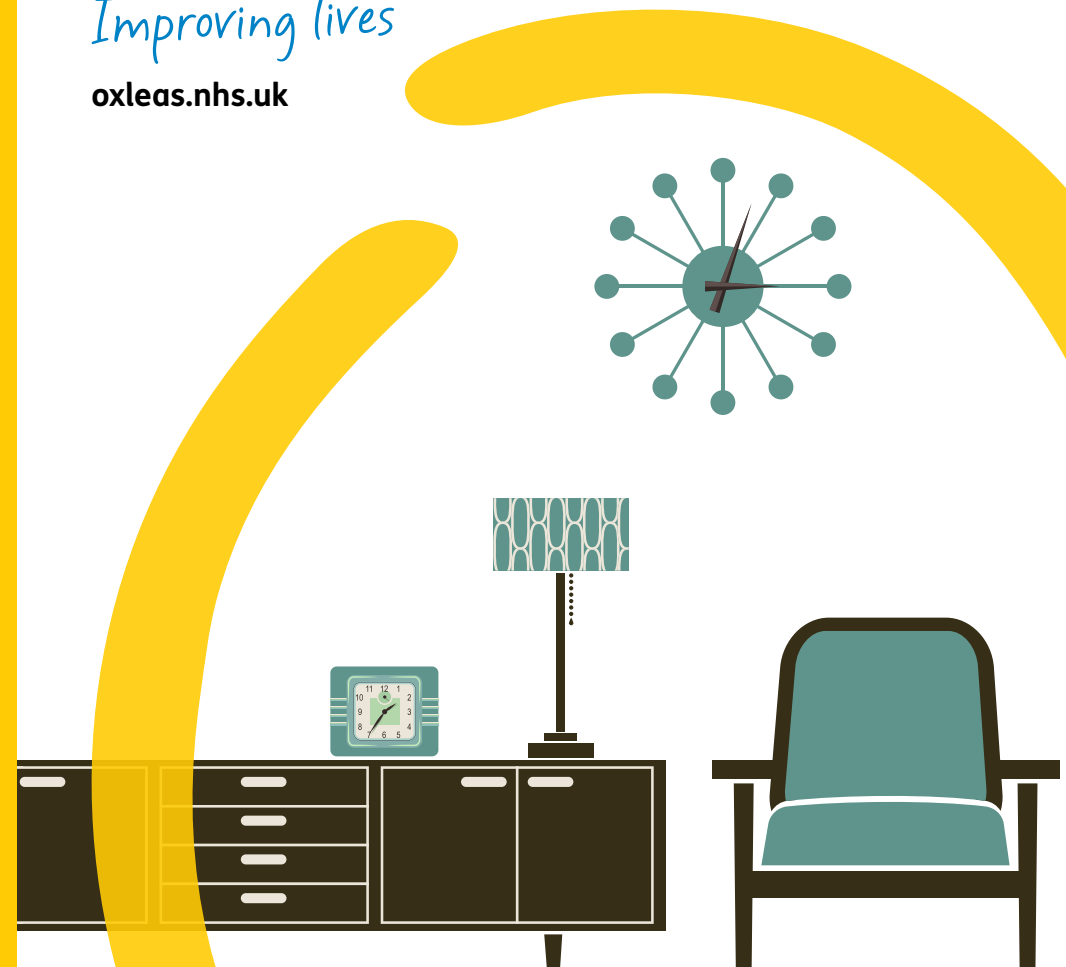
Holbrook ward

Our centre of excellence for dementia care

A new way forward

Improving lives

oxleas.nhs.uk



Holbrook is a dementia intensive care unit for people who have complex needs and behaviours related to their dementia.

The purpose of admission is to facilitate a timely person-centred assessment by specialist staff, to develop a personal care and management plan to enable a safe discharge from the ward.

On the ward we will provide:

- A safe and dementia-friendly care environment
- Person-centred multi-disciplinary team assessment and care planning
- Medical assessment and treatment
- Socio-psychological assessment and interventions
- Individualised meaningful activities and engagement
- Joint working with community services to plan for discharge
- Support for family and carers

Visiting

We recognise that visiting a person in hospital plays a vital part in aiding their recovery and overall care. Our aim is to ensure that visitors feel welcome and safe on the ward.

We are committed to working in partnership with patients and their visitors to improve patient care.

Visiting times are usually from 2pm to 5pm then 6pm to 8pm. However arrangements will be negotiated with each patient and their carer to devise a personal visiting plan.

We promote protected meal times so that patients can eat their meal in a quiet and relaxed atmosphere with minimal interruption.

Property on the ward

Patients on the ward usually wear their own clothes. Relatives are advised to provide a range of day and night wear which is marked with the person's name. Unfortunately we are not able to provide laundry facilities on the ward.

